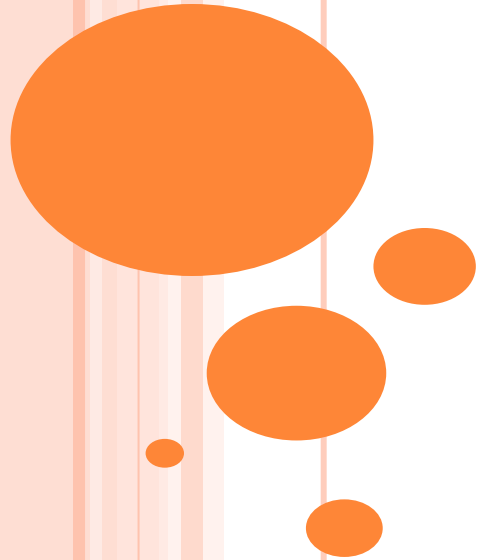




My CITY





In which country do we live?
What is a city?

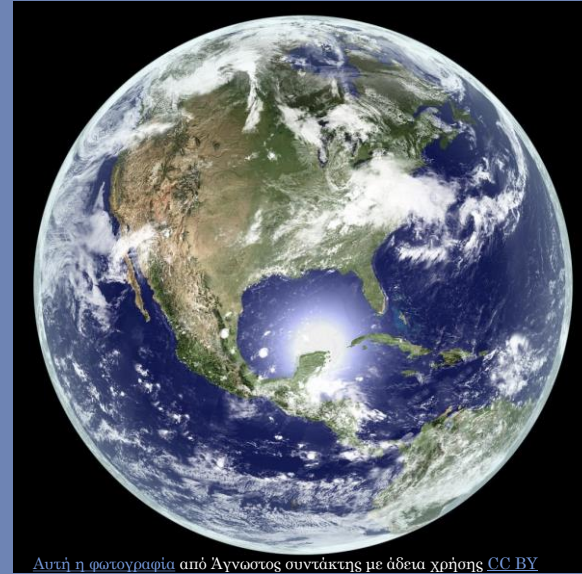




LET'S TAKE A JOURNEY!



Αυτή η φωτογραφία από Άγνωστος συντάκτης με άδεια χρήσης [CC BY-NC-ND](#)



Αυτή η φωτογραφία από Άγνωστος συντάκτης με άδεια χρήσης [CC BY](#)

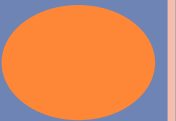
If we go very high in space we see our entire Earth, which has a lot of water and soil. Wherever there is soil, people live.

Let's get a little closer...



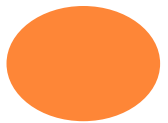


Humans have divided the Earth into countries. Here we see Spain, Italy and at the end is our country, Greece. Let's go a little closer to see her better.





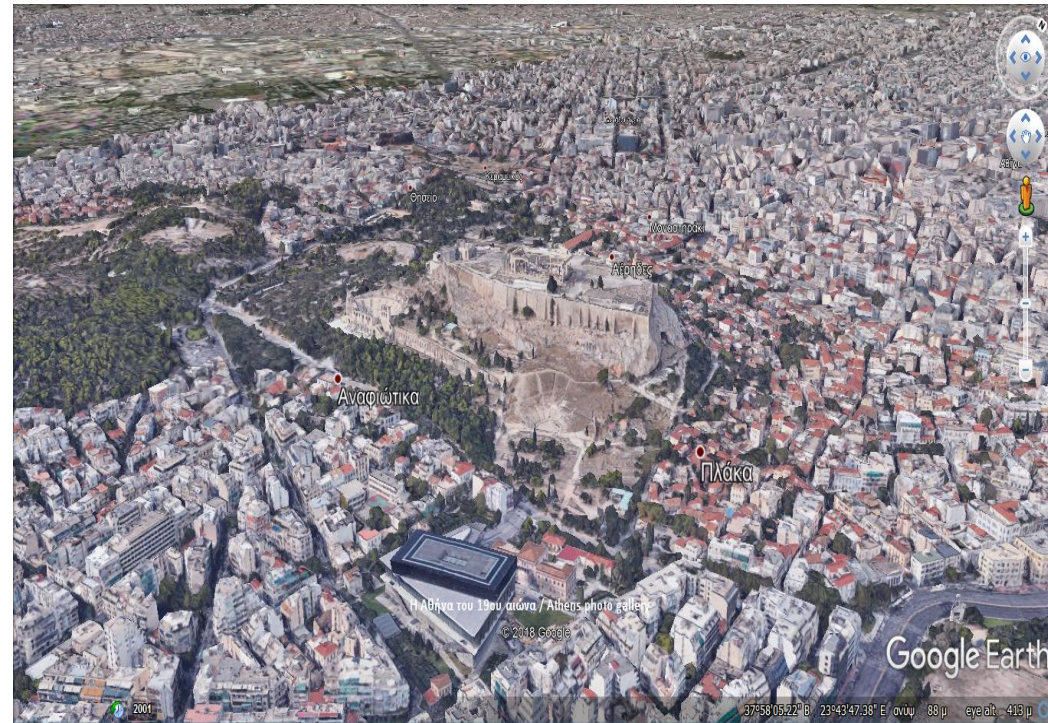
Here we see a picture of our country as seen from space. Only from space, we can see our whole country. There are many mountains, lakes, villages, and cities. This is how we make the map of our country. On the map, we painted the pieces of our country in different colors. There are villages and towns in every piece.





Tap the name of your city on Google Earth, you can see it as seen from above.
Try it !!! <https://www.google.com/earth/>

How does it look from above? Can you describe it?





What does a city need?

Buildings!

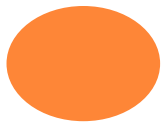
Houses, schools, stores.





What does a city need?

Public places: squares, playgrounds', sidewalks, streets.





What does a city need?

Green spaces: trees, flowers, parks.





We are made our city!

. The class is divided into three groups.

- The 1st team will undertake to make the city buildings
- The 2nd team the public places
- The 3rd team is responsible for the green spaces.

Drawing roads on 10-meter paper.





For the buildings, you will need old packaging, recyclable materials, color markers, and paint!

The team has to consider what buildings are needed to undertake, for example, a house, the school, the bakery, etc.



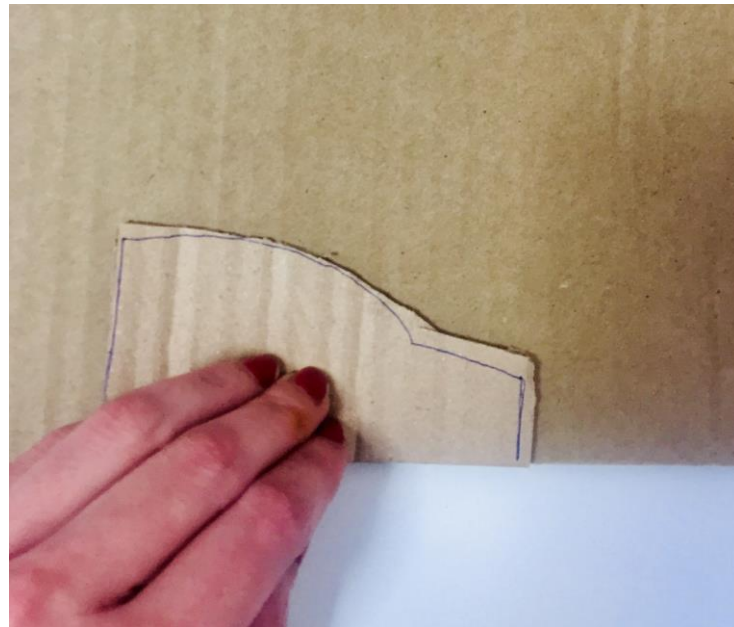
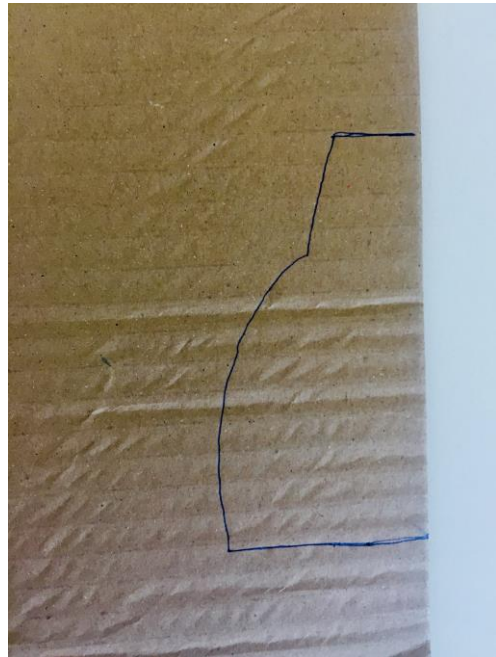


The 2nd team creates the public places. We are all responsible for public spaces such as the streets, the squares, the benches, and the playgrounds because we all enjoy them freely. First, draw a square with a playground in the center of your model on long paper. Then, the children make benches and place them in different parts of the city.





For the benches: On a piece of cardboard draw as shown in the first photo and the cut-out outline. Use your first design as a pattern to create more.





Σημειώστε στο χαρτόνι τα σημεία που φαίνονται στην πρώτη φωτογραφία. Στη συνέχεια λυγίστε την κατασκευή στο σημείο που βρίσκεται η κατώτατη γραμμή. Κολλήστε αυτό το σημείο στο χαρτί του μέτρου με ισχυρή υγρή κόλλα, ώστε να στέκεται όρθιο. Ο/η εκπαιδευτικός χρησιμοποιεί κοπίδι για να ανοίξει τα υπόλοιπα σημεία.





Περάστε μικρά ξυλάκια από τις εγκοπές που έχετε ανοίξει, όπως φαίνεται στις φωτογραφίες.



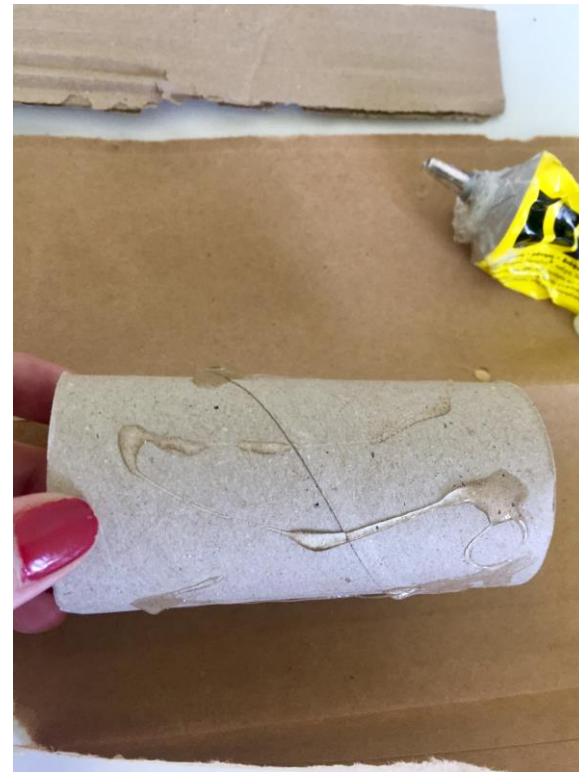


The 3rd team is responsible for the green spaces. We want it to be everywhere in the city. So you can draw flowers on paper and the create your trees by following the instructions.





Wrapped brown cardboard in the toilet paper tubes or kitchen roll tubes.





Cut small pieces of crepe paper (any kind of color)
and glue them to a plate.





Drill two notches in the top of the trunk and attach your plate.

Add all your constructions to the 10-meter paper. Students are invited to present their contributions.

